



Santa Cruz Avenue, Bletchley, MK3

£1,100pcm

Property Description

Stratfords estate agents are thrilled to be able to present this fantastic opportunity of a two bedroom maisonette with carport and outside storage located in the ever so popular location of Newton Leys. Situated only a short distance away from Bletchley, this development includes a number of amenities including Newton Leys primary school and shopping district with an ASDA supermarket to name a few.

The accommodation boasts two well-lit bedrooms with the master bedroom offering an alcove, perfectly placed for a wardrobe or storage. With a second bedroom also available, the property is ideal for a first time buyer or small family. The property offers great storage solutions, with space for storage as you're welcomed into the property entrance, along with a large storage cupboard situated between the two bedrooms.

As you approach the end of the hallway, you'll find a good sized bathroom, comprising of a 3 piece suite including a panelled bath tub with a fitted shower above, low level wc and pedestal wash hand basin. The bathroom is modern in style and has been kept in pristine condition.

The heart of the home is the open plan kitchen/living/diner space, great for entertaining. The space allows for a combination of both a dining table set, as well as a sofa to make it a multi-purpose area.

In addition to the well cared for maisonette, outside the building you can find a dedicated parking area with space for two cars and a large sized storage cupboard.

EPC Rating: C

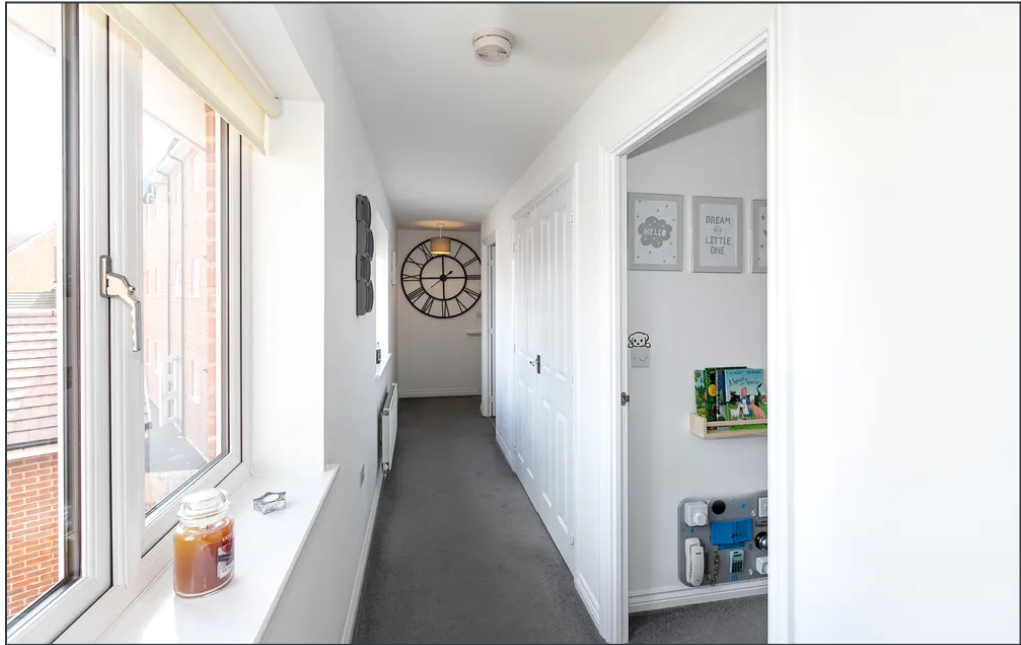


External Areas

Car Port

1 Parking Space





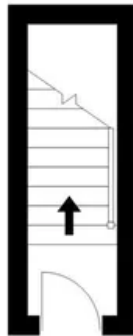




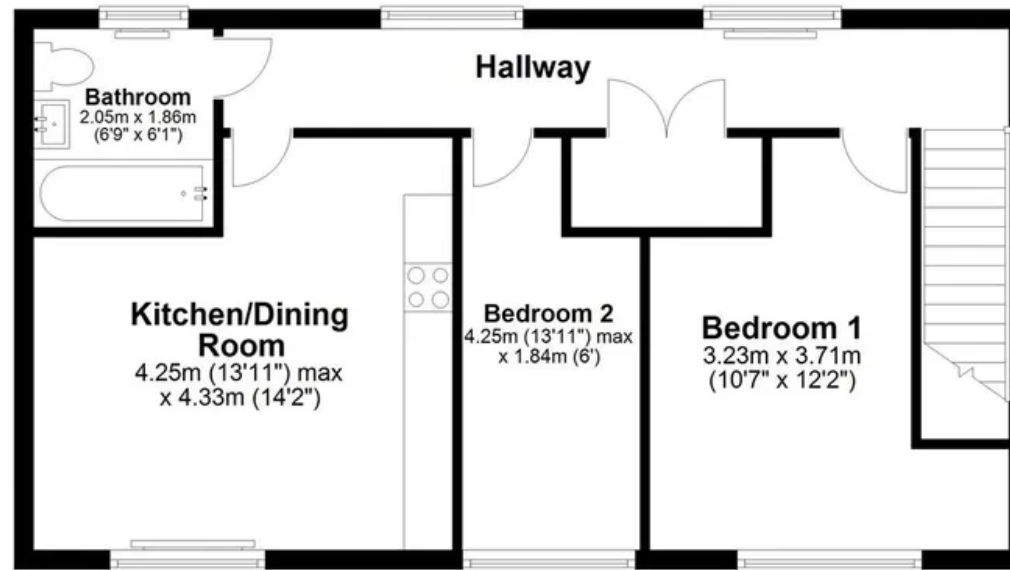


All

Ground Floor
Approx. 2.8 sq. metres (30.0 sq. feet)



First Floor
Approx. 54.3 sq. metres (584.7 sq. feet)



Total area: approx. 57.1 sq. metres (614.7 sq. feet)

Stratfords Residential Sales & Lettings Ltd

01908 630 100

info@stratfords.co.uk

